



Greater Manchester Green City Region Partnership

Date: 16 July 2024

Subject: Green City Region Partnership Terms of Reference 2024/5

Report of: Cllr Tom Ross, Leader of the Green City Region Portfolio

PURPOSE OF REPORT:

This report sets out the proposed Governance arrangements for the Green City Region Portfolio for the financial year 2024/25 for approval at this AGM.

It was agreed, at the GMCA meeting held in May 2024, that the GMCA Green City Region Portfolio Lead (Councillor Tom Ross, Trafford) be reappointed to Chair the GM Green City Region Partnership and Board for 2024/25 municipal year.

Given that the next 5 Year Environment Plan is due to be launched in the autumn, there are no substantial changes proposed to the Partnership Governance structure this year. It is likely that the existing Mission Based Approach will be reviewed over the coming months to assess how it may change to support delivery of the new plan.

Subject to approval today, there are potentially three new additions to the Partnership this year: Eve Holt, Strategic Director of GMMoving plus Voluntary Sector North West are currently electing two members to represent the Voluntary Sector.

RECOMMENDATIONS:

The Partnership is requested to:

1. Note the appointment of Chair and Vice Chair of the Green City Region Partnership for the 2024/25 municipal year – Cllr Tom Ross (Leader of Trafford MBC) and Cllr McCusker (Salford) respectively
2. Approve the revised Terms of Reference and governance structure for the Partnership for the 2024/25 municipal year including the Chair and Vice Chair arrangements for the Challenge Groups (Annex 01).
3. Agree to accept three new Members to the Partnership and consider whether there are any further gaps in Partnership Membership which should be filled.

CONTACT OFFICERS:

Jenny.Hollamby@greatermanchester-ca.gov.uk

Mark.Atherton@greatermanchester-ca.gov.uk

Robyn.Smith@greatermanchester-ca.gov.uk

ANNEX 01

Terms of Reference 2024/25

Portfolio	Green City Region Green City Region Partnership
Function/Purpose	<p>The purpose of the Greater Manchester Green City Region Partnership (the Partnership) is to provide strategic oversight of the delivery of the Greater Manchester 5 Year Environment Plan through a Mission Based Approach. In essence, the Mission Based Approach requires setting an ambitious Mission ‘Carbon Neutral City Region by 2038’ and breaking this down into manageable challenges. Rather than focusing on particular sectors, this approach focuses on problem specific challenges facing society, which will require many different sector’s involvement to solve.</p> <p>The Partnership is responsible, on behalf of the GMCA, for overseeing the monitoring and delivery arrangements for the Greater Manchester 5 Year Environment Plan and related elements of the Greater Manchester Strategy.</p> <p>The Partnership will:</p>

1. Work with partners to ensure that Greater Manchester can achieve the vision and objectives of the 5 Year Environment Plan, including the achievement of our longer-term target of carbon neutrality by 2038.
2. On behalf of GMCA, oversee the development and implementation of delivery programmes which contribute to achievement of Greater Manchester priorities articulated in the 5 Year Environment Plan.
3. Ensure that activities being undertaken are in line with local and national priorities.
4. Ensure that there is a robust evidence base for decision-making.
5. Regularly evaluate performance against Greater Manchester targets and priorities and support the identification of risks and opportunities.
6. Ensure that the work and investments of the Green City Region Partnership is integrated with and contributes to broader Greater Manchester priorities, communicating regularly with other Greater Manchester commissions and Boards (eg, Planning and Housing Commission, Transport, Waste, Infrastructure Committees and Local Enterprise Partnership/Business Board).
7. Influence local, national and international policies, legislation and programmes in order to deliver a secure, low carbon future for Greater Manchester.
8. Broker agreement at strategic level to resolve apparent barriers to delivery.
9. Identify potential resources and provide a strategic overview to ensure that all available resources are utilised to enable the city region to deliver its ambitious vision for carbon neutrality by 2038.

	<p>10. Actively engage with the ten districts and other Greater Manchester Authorities to act as a conduit for the sharing and adoption of good practices.</p> <p>11. Identify and undertake communication activities to engage with Greater Manchester stakeholders and communities on the 5 Year Environment Plan, acting within the scope of the GMCA Communications Strategy.</p>						
Delegations	None.						
Accountability	<p>The Partnership will be accountable to the GMCA. The Partnership will not make decisions, financial or otherwise, that require GMCA approval, but will refer and make recommendations to GMCA as appropriate.</p> <p>The Partnership will oversee delivery via a number of Challenge Groups, identifying individual tasks (Task and Finish Groups), synergies and gaps, then provision of appropriate advice to the GMCA on mitigation measures, including the development and delivery of future policies and strategies.</p>						
Statutory/Decision Making/Informal	Informal.						
Membership	<table> <tr> <td>Councillor Tom Ross</td> <td>Portfolio Holder & Chair</td> </tr> <tr> <td>Councillor McCusker</td> <td>Portfolio Assistant/Vice-Chair</td> </tr> <tr> <td>Sue Johnson</td> <td>Lead Chief Executive</td> </tr> </table>	Councillor Tom Ross	Portfolio Holder & Chair	Councillor McCusker	Portfolio Assistant/Vice-Chair	Sue Johnson	Lead Chief Executive
Councillor Tom Ross	Portfolio Holder & Chair						
Councillor McCusker	Portfolio Assistant/Vice-Chair						
Sue Johnson	Lead Chief Executive						

	<p>To be appointed</p> <p>Councillor Mike McCusker</p> <p>Steve Connor</p> <p>Roger Milburn</p> <p>Ian Crewe</p> <p>Ian Rutherford</p> <p>Hisham Elkadi</p> <p>Carly McLaughlin</p> <p>Liz Price</p> <p>Eve Holt</p> <p>To be appointed</p> <p>Bernard Magee</p> <p>Chris Oglesby</p> <p>Patrick Allcorn</p> <p>Kristina Poole</p> <p>Carl Moore/Steph Everett</p> <p>Louise Marix-Evans</p>	<p>Waste & Recycling Committee Representative</p> <p>Transport Committee and Housing and Planning Representative</p> <p>Greater Manchester Business Board Representative</p> <p>ARUP, Strategic Infrastructure Board Chair</p> <p>Environment Agency Representative</p> <p>GM Interfaith Climate Action Network</p> <p>Salford University Representative</p> <p>University of Manchester Representative, Tyndall Centre for Climate Change Research, 5 Year Environment Plan Forum Chair</p> <p>Manchester Metropolitan University Representative</p> <p>GMMoving</p> <p>2x Voluntary Sector Representatives</p> <p>Siemens, Private Sector Representative</p> <p>Bruntwood, Private Sector Representative</p> <p>Central Government Representative (DESNZ)</p> <p>Central Government Representative (PHE)</p> <p>Central Government Representatives (Homes England)</p> <p>Quantum, 5 Year Environment Plan Forum Vice-Chair</p>
--	--	---

	<p>Richard Halsey Energy Systems Catapult, Low Carbon Challenge Group Chair</p> <p>Will Swan University of Salford, Low Carbon Challenge Group Vice-Chair</p> <p>Anne Selby Independent, Natural Capital Challenge Group Chair</p> <p>Chris Matthews United Utilities, Natural Capital Vice-Chair</p> <p>Louise Blythe BBC Academy, Green Communications Challenge Group Chair</p> <p>Paul Hooper Manchester Metropolitan University, Sustainable Consumption and Production Challenge Group Chair</p> <p>Leigh Broadhurst Suez, Sustainable Consumption and Production Challenge Group Vice-Chair</p> <p>Claire Igoe NHS Greater Manchester Lead Policy Organisation Representatives</p> <p>Mike Taylor Electricity North West Limited</p> <p>Phil Korbel Cooler Projects</p> <p>Mark Atherton GMCA, Lead Policy Organisation Representative</p> <p>Megan Black Transport for Greater Manchester, Lead Policy Organisation Representative</p>
Appointment of Chair (and Vice Chair)	<p>The Chair of the Partnership is the Green City Region Portfolio Holder – Councillor Tom Ross. Portfolio Holders are appointed by the GMCA in June/July each year.</p>

	<p>The Lead Chief Executive is appointed to the Partnership as part of the GMCA process – Sue Johnson.</p> <p>The Vice-Chair/Portfolio Assistant will be appointed at the Annual Meeting of the Partnership in July each year.</p> <p>Appointments from other Committees are made at their Annual Meetings in June/July each year. These are the Waste and Recycling Committee, Transport Committee, and the Greater Manchester Business Board.</p>
Voting	N/A
Meeting arrangements	<p>The Partnership will meet on a quarterly basis. Meeting dates will be set once a year in advance and proposed at the Annual Meeting. The Annual Meeting of the Partnership will normally be held in July each year.</p> <p>Meetings will be held in public and non-confidential papers will be published on the GMCA website in advance. Papers will be issued five working days before meetings, and a meeting note will be issued within two weeks of the meeting date. The GMCA constitution describes the criteria which an item must meet in order for it to be considered in private. Reports which meet those confidentiality or exemption criteria will be considered in a Part B section of the meeting which excludes the public, as permitted under Schedule 12A of the Local Government Act 1972.</p>

	<p>The Partnership will commission Challenge Groups to undertake the specific activities on behalf of the Partnership.</p>
<p>Challenge Groups</p>	<p>The Partnership will commission Challenge Groups to undertake the specific activities on behalf of the Partnership. The Challenge Groups will be Chaired/Vice-Chaired by Partnership members.</p> <p>The following are proposed for 2024/25:</p> <ol style="list-style-type: none"> 1. Low Carbon (Richard Halsey and Will Swan) 2. Natural Capital (Anne Selby and Chris Matthews) 3. Communications and Engagement (Louise Blythe and Vacancy) 4. Sustainable Consumption and Production (Paul Hooper and Leigh Broadhurst) 5. 5 Year Environment Plan Forum (Carly McLachlan and Louise Marix-Evans) <p>The Terms of Reference for the Challenge Groups will be devised by each Group and agreed by the Partnership (see below)</p> <p>Each of the Challenge Groups will be asked to drive forward action to achieve the targets set out in the 5 Year Environment Plan, report upon progress and identify any barriers, which need to be overcome for further progress to be made towards achieving the overall mission. The Challenge Groups will establish Task and Finish Groups as required to undertake specific activities.</p>
<p>Roles and Responsibilities</p>	<p>Lead Portfolio Holder and Chair</p>

As set out in the Greater Manchester Strategy, Portfolio Leads will own and lead the development of the Greater Manchester response to those strategic priorities that fall within their remit.

The Portfolio Lead for Green City Region will:

- Chair the Green City Region Partnership and Board.
- Provide strategic direction for Greater Manchester's Green City Region approach.
- Maintain oversight of key programmes within the portfolio.
- Ensure alignment between Green City Region policies and programmes and broader Greater Manchester priorities.
- With the Lead Chief Executive, agree the agenda and papers for each meeting.
- Provide strategic input and direction to Greater Manchester and national leadership.
- Represent the Partnership in high profile discussions, events and activities at GM level and beyond.
- Represent the Partnership in engagement with GMCA and the Greater Manchester Business Board.

Partnership Members

It is expected that Partnership Members will:

- Regularly attend and contribute to meetings.
- Thoroughly review papers and inform the work of the Partnership.
- If appropriate, Chair or Vice-Chair one of the Challenge Groups and regularly report on progress to the Partnership.
- Individually lead specific programmes that contribute to strategic objectives where appropriate.
- Actively identify and advise upon the adoption of good practice.
- Act as a conduit to and represent on the Partnership, the organisation and/or professional field they come from.
- Ensure that they maintain full accountability and transparency to the Partnership on any activities carried out on behalf of the Partnership.
- That any comment or activity undertaken in their capacity as a Partnership Member is aligned with and endorsed by the Partnership.
- Support and enable communication with wider stakeholders about the work of the Partnership, acting as advocates for the Partnership's work.

Supporting Officers

To co-ordinate activity across the programme, the Lead Chief Executive, or deputy, will Chair an Environment Programme Delivery Executive Group.

	<p>Supporting Officers will:</p> <ul style="list-style-type: none"> • Provide regular briefings to the Portfolio Lead, Lead Chief Executive, Partnership and Board on the Green City work programme. • Provide relevant and timely information and reports to the Partnership and Board to enable them to provide timely advice to support the GMCA. • Provide updates to Partnership and Board Members as requested on relevant programmes of work.
Support Arrangements	<p>The Partnership will be supported by the Director of Environment, GMCA, the Greater Manchester Environment Team and other teams as appropriate Transport for Greater Manchester (TfGM) (Transport) and the Manchester Growth Hub (Sector Development). Democratic support will be provided by the GMCA Governance and Scrutiny Team.</p>
Lead contact	<ul style="list-style-type: none"> • Mark Atherton, Director of Environment, GMCA (mark.atherton@greatermanchester-ca.gov.uk) • Jenny Hollamby, Senior Governance Officer, GMCA (jenny.hollamby@greatermanchester-ca.gov.uk)
Date TOR were approved	16 July 2024

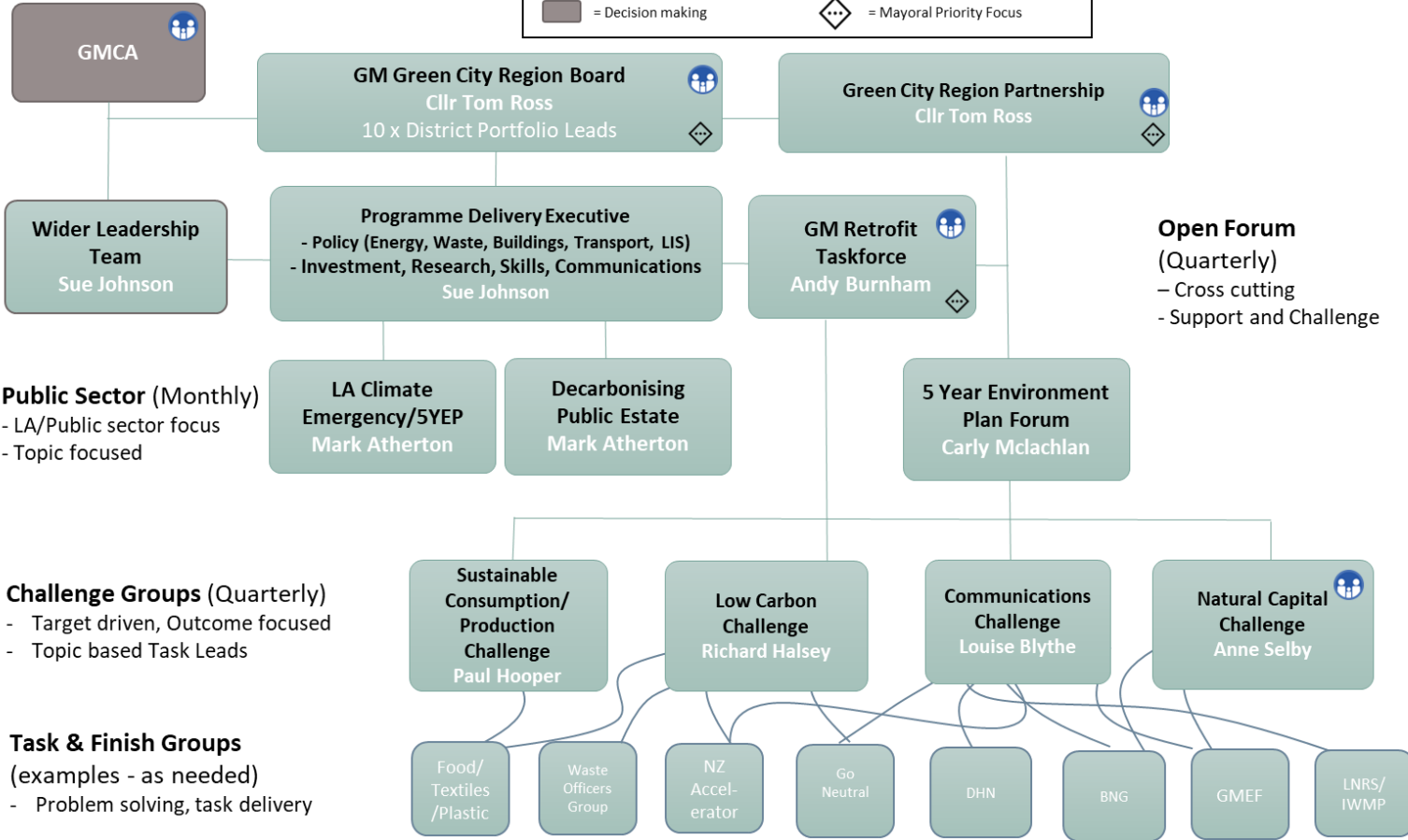
ANNEX 01b

Green City Region Governance – Mission Based Approach

Governance

Legend

- [Light Green Box] = Advisory – Non Decision making
- [Dark Green Box] = Decision making
- [Blue Person Icon] = Elected Member Representation
- [Diamond with Dots] = Mayoral Priority Focus



Public Sector (Monthly)
 - LA/Public sector focus
 - Topic focused

Challenge Groups (Quarterly)
 - Target driven, Outcome focused
 - Topic based Task Leads

Task & Finish Groups
 (examples - as needed)
 - Problem solving, task delivery

Open Forum
 (Quarterly)
 - Cross cutting
 - Support and Challenge

Key Influencers



ANNEX 1c – Challenge Groups Terms of Reference

Portfolio	Five Year Environment Plan Forum
Function/Purpose	<p>The Forum brings together partners to support delivery against the targets in the Five Year Environment Plan (5YEP) and the target of carbon neutrality by 2038.</p> <p>The Forum supports a whole system approach across a spectrum of activities. These may include but are not restricted to:</p> <ul style="list-style-type: none">• Review reports from Challenge Groups and identify ways to support and scale interventions/project etc.• Assess barriers and opportunities and put forward measures to overcome them communicating these to Challenge Groups/Green City Region Partnership as appropriate.• If required, assign individual tasks to Task and Finish Groups, and monitor progress on the tasks.• Produce reports, publications and policy recommendations as required;• Support delivery through partner organisations and networks - raising funding and commission work on the ground to accelerate delivery where possible.• Provide link between community groups and activity in the 5YEP and the GCR Partnership.• Provide link between businesses and activity in the 5YEP and the GCR Partnership• Support lobbying asks to national government where appropriate.

	<ul style="list-style-type: none"> • Support GM role in contributing to local, national and international climate action, governance and networks. <p>5YEP Forum Members will, through their commitment and participation, act as conduits to their wider organisations/business units.</p>
Accountability	<p>The Forum operates as part of the Green City Region Mission Based Approach and reports to the Green City Region Partnership on a quarterly basis.</p>
Membership	<p>The Forum comprises a Chair and Vice Chair plus appropriate members from the public/private/voluntary sectors of GM. Group members may be asked, at the discretion of the Chair, to assume responsibility for certain portfolios or tasks.</p> <p>Carly McLachlan, Tyndall Centre for Climate Change Research, Chair Louise Marix-Evans, Quantum, Vice Chair Adam Briggs, National Farmers Union Alex Forrest, City of Trees Amy House, Growth Company Angie Jukes, Natural England Beth Sharratt, GMCVO Brad Blundell, Anthesis Brian Handcock, Balfour Beatty</p>

Charlie Baker, Red Coop
Charlotte Thwaite, Food Sync
Craig Morley, Bruntwood
David Healy, Keele University
David Schiele, Energy Innovation Agency
Deborah Murray, Groundwork
Ellie Voke, Procure Plus
Emma Gardner, Diocese of Salford
Sarah Fletcher-Hogg, NHS
Helen Boyle, Cadent Gas
Ian Taylor, GMCVO
Jackie Copley, CPRE Lancashire
Jemma Hynes, Food Sync
John Hannen, GMCVO
Jonathan Atkinson, Carbon Coop
Kit Knowles, Ecospheric
Leigh Broadhurst, Suez
Lydia Meryll,
Lynda Stefek, TfGM
Mark Burton, Steady State Manchester
Mark Easedale, Environment Agency
Michael Ormerod, Groundwork

	<p>Mike Hemmingway, Salford</p> <p>Nick Houghton-Best, Nibe</p> <p>Owen Porter, Bruntwood</p> <p>Patrick Hackett, University of Manchester</p> <p>Pete Abel, Friends of the Earth</p> <p>Phil Korbel, Carbon Literacy Trust</p> <p>Richard Shires, Steady State Manchester</p> <p>Robin Lawler, Independent</p> <p>Robin Adderly, Nibe</p> <p>Sam Bolton, City of Trees</p> <p>Sam Nicholson, Manchester Climate Change Agency</p> <p>Stephanie Wyatt, Groundwork</p> <p>Steve Connor, Creative Concern</p> <p>Viki Lee, GMCVO</p> <p>Will Swan, University of Salford</p> <p>Thomas Hague, Procure Plus</p>
<p>Appointment of Chair (and Vice Chair)</p>	<p>The Chair is appointed by the Chair of the GCR Partnership on behalf of the Combined Authority.</p> <ul style="list-style-type: none"> • Chair: Carly McLachlan, UoM Tyndall Centre • Vice Chair: Louise Marix-Evans, Quantum

Meeting arrangements	The Group will meet quarterly for 1.5 hours, with meeting dates arranged for a full financial year to align with the GCR Partnership timeline.
Lead contact	GMCA Robyn.Smith@greatermanchester-ca.gov.uk
Date TOR were approved	TBC

ANNEX 03

Portfolio	Green Communications Delivery Challenge Group
Function/Purpose	<p>The Green Communications Delivery Challenge Group brings together communications, marketing and engagement leads focused on the green agenda from the ten Greater Manchester districts and key city region delivery partners.</p> <p>The group intends to:</p> <ul style="list-style-type: none">• Create a shared narrative of delivery for the environment in Greater Manchester.• Collaborate and jointly work on projects and initiatives, supporting delivery of the Five-Year Environment Plan or other emerging green priorities.• Work with the Sustainable Consumption and Production Challenge Group's behaviour change task and finish group to provide comms support for their behaviour change campaigns.• Deliver communications campaigns based on key audiences.• Amplify individual campaign activity via the group's myriad partner channels.• Share insight and best practice across organisations. <p>Working groups, reporting into the overall group, may be formed for strategically important projects, such as the annual Greater Manchester Green Summit.</p>

Accountability	The Challenge Group operates as part of the Green City Region and reports to the Green City Region Partnership on a quarterly basis.
Membership	<p>The Challenge Group comprises a Chair and Vice Chair plus appropriate members from the public/private/voluntary sectors of GM. Group members may be asked, at the discretion of the Chair, to assume responsibility for certain portfolios or tasks.</p> <p>Louise Blythe, BBC (Chair) Aimee Lawless, City of Trees Alan Wright, Lancashire Wildlife Trust Amy Louvre, MMU Andrew Swarbrick, RHS Anna Bond, Manchester Climate Change Agency Bernadette Colligan. Rochdale Claire Smith, Growth Company Courtney Lambert, 10GM Dien Curtis, Bruntwood Ellen Sherlock, Manchester Climate Change Agency Emma Williams, SSE Fiona Turner, Manchester Jacqui Musson, Growth Company Jonathan Morgan, ENWL</p>

Kasia Juraszek, Wigan
Louise Egan, Rochdale
Louise Hayes, NHS
Matthew Sutcliffe, Bolton
Michael Chick, Suez
Nikki Brown, Marketing Manchester
Rosie Cade, Green Finance Institution
Sarah Bazley, Environment Agency
Simon Donohue, TfGM
Stephanie Boyle, Growth Company
Stephanie Wyatt, Groundwork
Sue Hill, Salford
Tom Jackson, VSNW
Viki Lee, GMCVO
Mark Atherton, GMCA
Michelle Lynch, GMCA
Michelle Whitfield, GMCA
Oscar Lynch, GMCA
Robyn Smith, GMCA
Sarah Mellor, GMCA
Tom Davies, GMCA

Appointment of Chair (and Vice Chair)	<p>The Chair is appointed by the Chair of the GCR Partnership on behalf of the Combined Authority.</p> <ul style="list-style-type: none"> • Chair: Louise Blythe, BBC • Vice Chair: Vacant
Meeting arrangements	<p>The Group will meet every six weeks for 1 hours, with meeting dates arranged for a full financial year to align with the GCR Partnership timeline.</p>
Lead contact	<p>GMCA</p> <p>Thomas.Davies@greatermanchester-ca.gov.uk</p> <p>Michelle.Whitfield@greatermanchester-ca.gov.uk</p> <p>Robyn.Smith@greatermanchester-ca.gov.uk</p>
Date TOR were approved	<p>10th July 2024</p>

ANNEX 04

Portfolio	Low Carbon Challenge Group
Function/Purpose	<p>The Greater Manchester Low Carbon Challenge Group brings together partners to deliver against the targets in the Five Year Environment Plan (5YEP).</p> <p>The targets for 2019-2024 include:</p> <ul style="list-style-type: none">• Increasing local renewable energy generation, adding at least a further 45MW• Decarbonising how we heat our buildings, adding at least a further 10TWh of low carbon heating.• Increasing the diversity and flexibility of our electricity supply, adding at least a further 45MW of diverse and flexible load.• Reduce heating demand from existing homes – making progress in scaling up to what is required (i.e. retrofit on the scale of 61,000 properties per year reducing heat loss by 57% up to 2040).• Reduce heating demand from existing public and commercial buildings (i.e. requiring retrofit on the scale of a 30% reduction in space heating demand by 2040) <p>The challenge group will work collaboratively to accelerate and scale up activity addressing key barriers to achieving the targets.</p> <p>The Challenge Group activities include but are not restricted to:</p>

	<ul style="list-style-type: none"> • Assess barriers and opportunities and put forward measures to overcome them and communicating these to Challenge Groups/Green City Region Partnership as appropriate. • Assign individual tasks to Task and Finish Groups and monitor progress on the tasks. • Produce reports, publications and policy recommendations as required; • Raise funding, engage contractors and commission work on the ground to accelerate delivery. • Support delivery through your own organisations and networks. • Take full account of existing work and seek to join up where possible and desirable. • Support lobbying asks to national government where appropriate. • Support GM role in contributing to local, national, and international climate action, governance and networks. <p>Challenge Group Members will, through their commitment and participation, act as conduits to their wider organisations/business units.</p>
<p>Accountability</p>	<p>The Challenge Group operates as part of the Green City Region and reports to the Green City Region Partnership on a quarterly basis.</p>

Membership

The Challenge Group comprises of a Chair and Vice Chair plus appropriate members from the public/private/voluntary sectors of GM. Group members may be asked, at the discretion of the Chair, to assume responsibility for certain portfolios or tasks.

Richard Halsey, Energy Systems Catapult (Chair)

Will Swan, University of Salford

Alex Edwards, Bruntwood

Amer Gaffar, Manchester Metropolitan Museum

Andy Barrow, Trust Renewables

Andy Kippax, Stockport

Bean Beanland, Heat Pump Federation

Charlie Baker, Red Coop

Craig Morley, Bruntwood

Daniel Dickinson, Energy Innovation Agency

David Healy, Keele University

David Kemp, Turner Townsend

David Schiele, Energy Innovation Agency

Emma Harvey-Smith, Green Finance Institute

Eric Adams, Carlton Power

Helen Boyle, Cadent Gas

Jonathan Atkinson, Carbon Coop

Katherine Burden, Growth Company

	<p>Kit Knowles, Ecospheric</p> <p>Lynda Stefek, TfGM</p> <p>Matt Ferretti, Green Finance Institute</p> <p>Matt Turner, AECOM</p> <p>Michael Wilton, Arup</p> <p>Neil Hind, NHS</p> <p>Sam Nicholson, Manchester Climate Change Agency</p> <p>Sue Gibson, Arup</p> <p>Tracey Lynn, ENWL</p> <p>Joe Crolla, GMCA</p> <p>Mark Atherton, GMCA</p> <p>Robyn Smith, GMCA</p> <p>Sarah Holland, GMCA</p> <p>Sean Owen, GMCA</p> <p>Thomas Addison, GMCA</p> <p>Todd Holden, GMCA</p>
<p>Appointment of Chair (and Vice Chair)</p>	<p>The Chair is appointed by the Chair of the GCR Partnership on behalf of the Combined Authority.</p> <ul style="list-style-type: none"> • Chair: Richard Halsey, Energy Systems Catapult • Vice Chair: Will Swan, University of Salford

Meeting arrangements	The Group will meet quarterly for 2 hours, with meeting dates arranged for a full financial year to align with the GCR Partnership timeline.
Lead contact	GMCA Robyn.Smith@greatermanchester-ca.gov.uk
Date TOR were approved	TBC

Portfolio	Natural Capital Group
Function/Purpose	<p>The NCG delivers the Local Nature Partnership in the Greater Manchester area. Greater Manchester is pioneering innovative approaches for investing in and managing the environment, supporting the implementation of the 5 Year Environment Plan (5YEP). Our purpose is to ensure that nature and the services it provides are protected and enhanced to deliver value to communities across Greater Manchester.</p> <p>The NCG targets/priorities include:</p> <ul style="list-style-type: none"> • Manage our land sustainably, including planting 1 million trees by 2024 – creating rich habitat, in good condition for wildlife, delivering partnership projects at a landscape scale. • Managing our water and its environment sustainably – enhancing water quality and reducing the risk of flooding. • Achieving a net gain in biodiversity for new development – embedding the natural environment in decision making and championing the wider benefits to society this brings, such as improving health and wellbeing. • Increasing investment into our natural environment – a good deal for nature by working with national and local government and the private sector. • Increasing our engagement with our natural environment – more people and businesses inspired by, and taking action for, wildlife, with more people visiting local green spaces.

- Embracing natural capital approaches to deliver environmental enhancements such as greater carbon sequestration and biodiversity net gain.
- Develop the means to measure the social value of Greater Manchester's environment, drawing on measures such as health and wellbeing benefits for the population and nature and greenspace indicators.

The Challenge Group activities include but are not restricted to:

- Assess barriers and opportunities and put forward measures to overcome them and communicating these to Challenge Groups/Green City Region Partnership as appropriate.
- Assign individual tasks to Task and Finish Groups and monitor progress on the tasks.
- Produce reports, publications and policy recommendations as required;
- Raise funding, engage contractors and commission work on the ground to accelerate delivery.
- Support delivery through your own organisations and networks.
- Take full account of existing work and seek to join up where possible and desirable.
- Support lobbying asks to national government where appropriate.
- Support GM role in contributing to local, national, and international climate action, governance and networks.

	Challenge Group Members will, through their commitment and participation, act as conduits to their wider organisations/business units.
Delegations	None
Accountability	The Challenge Group operates as part of the Green City Region and reports to the Green City Region Partnership on a quarterly basis.
Statutory/Decision Making/Informal	Informal
Membership	<p>The Challenge Group comprises of a Chair and Vice Chair plus appropriate members from the public/private/voluntary sectors of GM. Group members may be asked, at the discretion of the Chair, to assume responsibility for certain portfolios or tasks.</p> <p>Executive members</p> <p>Anne Selby Chris Matthews, United Utilities Adam Briggs, National Farmers Union Andrew Swarbrick, RHS Deborah Murray, Groundwork Derek Richardson, Tameside Ginny Hinton, Natural England</p>

	<p>Jessica Twist, City of Trees</p> <p>Jo Holden, Peel</p> <p>Jon Grace, NHS</p> <p>Mark Easedale, Environment Agency</p> <p>Petula Neilson, Natural England</p> <p>Tom Burditt, Lancashire Wildlife Trust</p> <p>Will Horsfall</p> <p>David Hodcroft, GMCA</p> <p>Kathy Oldham, GMCA</p> <p>Mark Atherton, GMCA</p> <p>Mark Turner, GMCA</p> <p>Rachel Morrison, GMCA</p> <p>Robyn Smith, GMCA</p> <p>Sam Evans, GMCA</p> <p>Tom Davies, GMCA</p>
Appointment of Chair (and Vice Chair)	<p>The Chair is appointed by the Chair of the GCR Partnership on behalf of the Combined Authority.</p> <ul style="list-style-type: none"> • Chair: Anne Selby • Vice Chair: Chris Matthews, UU
Voting	N/A

Meeting arrangements	The Group will meet quarterly for 2 hours, with meeting dates arranged for a full financial year to align with the GCR Partnership timeline.
Lead contact	Sam Evans, Head of Natural Environment, GMCA (samuel.evans@greatermanchester-ca.gov.uk) Jenny Hollamby, Senior Governance Officer, GMCA (jenny.hollamby@greatermanchester-ca.gov.uk) Robyn Smith, Project Manager for the Mission Based Approach, (robyn.smith@greatermanchester-ca.gov.uk)
Date TOR were approved	2 nd July 2024

ANNEX 06

Portfolio	Sustainable Consumption and Production Challenge Group
Function/Purpose	<p>The Greater Manchester Sustainable Consumption and Production Challenge Group brings together partners to deliver against the targets in the Five Year Environment Plan (5YEP).</p> <p>The SCP targets/priorities include:</p> <ul style="list-style-type: none">• Produce goods and services more sustainably, moving to a circular economy• Become more responsible consumers.• Managing our waste as sustainably as possible.• Reducing unnecessary food waste. <p>The challenge group will work collaboratively to accelerate and scale up activity addressing key barriers to achieving the targets.</p> <p>The Challenge Group activities include but are not restricted to:</p> <ul style="list-style-type: none">• Assess barriers and opportunities and put forward measures to overcome them and communicating these to Challenge Groups/Green City Region Partnership as appropriate.• Assign individual tasks to Task and Finish Groups and monitor progress on the tasks.• Produce reports, publications and policy recommendations as required;

	<ul style="list-style-type: none"> • Raise funding, engage contractors and commission work on the ground to accelerate delivery. • Support delivery through your own organisations and networks. • Take full account of existing work and seek to join up where possible and desirable. • Support lobbying asks to national government where appropriate. • Support GM role in contributing to local, national, and international climate action, governance and networks. <p>Challenge Group Members will, through their commitment and participation, act as conduits to their wider organisations/business units.</p>
Accountability	<p>The Challenge Group operates as part of the Green City Region and reports to the Green City Region Partnership on a quarterly basis.</p>
Membership	<p>The Challenge Group comprises of a Chair and Vice Chair plus appropriate members from the public/private/voluntary sectors of GM. Group members may be asked, at the discretion of the Chair, to assume responsibility for certain portfolios or tasks.</p> <p>Paul Hooper, MMU Leigh Broadhurst, Suez Adrian Morley, MMU Alex Forrest, Eunomia</p>

	<p>Charlotte Thwaite, Food Sync</p> <p>Claire Igoe, NHS</p> <p>Corin Bell, Open Kitchen MCR</p> <p>Helen Ashcroft, Trafford</p> <p>Jemma Hynes, Food Sync</p> <p>Juan Ferriz-Papi, University of Salford</p> <p>Matt Chard, GMFRS</p> <p>David Taylor, GMCA</p> <p>Mark Atherton, GMCA</p>
Appointment of Chair (and Vice Chair)	<p>The Chair is appointed by the Chair of the GCR Partnership on behalf of the Combined Authority.</p> <ul style="list-style-type: none"> • Chair: Paul Hooper, MMU • Vice Chair: Leigh Broadhurst, Suez
Meeting arrangements	<p>The Group will meet quarterly for 2 hours, with meeting dates arranged for a full financial year to align with the GCR Partnership timeline.</p>
Lead contact	<p>GMCA</p> <p>Robyn.Smith@greatermanchester-ca.gov.uk</p> <p>Sarah.Mellor@greatermanchester-ca.gov.uk</p>

Date TOR were approved

TBC